

Media Release

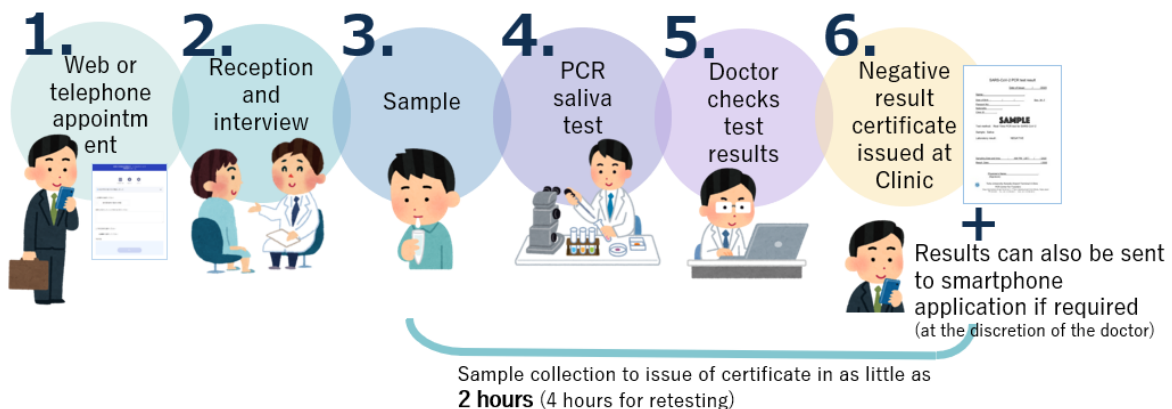
9 November 2020

## PCR Saliva Testing for Passengers Traveling Abroad Will Enable Negative Result Certification in as Little as 2 Hours at Haneda Airport

Toho University, Japan Airport Terminal Co., Ltd., Tokyo International Air Terminal Corporation, and H.U. Group Holdings, Inc. have improved and expanded the PCR saliva testing system carried out at the Toho University Haneda International Airport Clinic (hereinafter "the Clinic"), thereby making it possible to issue negative result certificates within 2 hours of testing from 9 November. Appointments for testing can be made on the Clinic's website and test results sent to smartphone PHR (Personal Health Record) applications.

This will increase the convenience of PCR testing for international travelers at Haneda Airport and contribute to the resumption of international traffic through air travel.

### PCR Testing Activity Flow from Appointment to Certificate



\* H.U. Group Holdings Inc., a subsidiary of SRL, Inc., is contracted by the Clinic to carry out PCR testing and test results can be checked on the PHR application, With Wellness™.

Website: <https://www.withwellness.com/pr/> (in Japanese)

## Toho University Haneda International Airport Clinic PCR Saliva Testing for Passengers Traveling Abroad

### ○ Persons eligible for tests (those who meet all of the following conditions)

- In sound health
- Require PCR testing for COVID-19 in order to travel abroad
- Hold a valid passport
- Have made an appointment

### ○ Hours

Test sample collection: Daily (including Saturday, Sunday and public holidays) between 9:00AM and 11:30AM, and 1:00PM and 5:30PM

Certificate issue: Daily (including Saturday, Sunday and public holidays) between 9:00AM and 11:30AM, and 1:00PM and 10:00PM

### ○ Description of test

PCR saliva test (RT-PCR)

### ○ Charge

JPY38,500 (tax including) covers testing and issue of certificate, and payment by credit card is accepted.

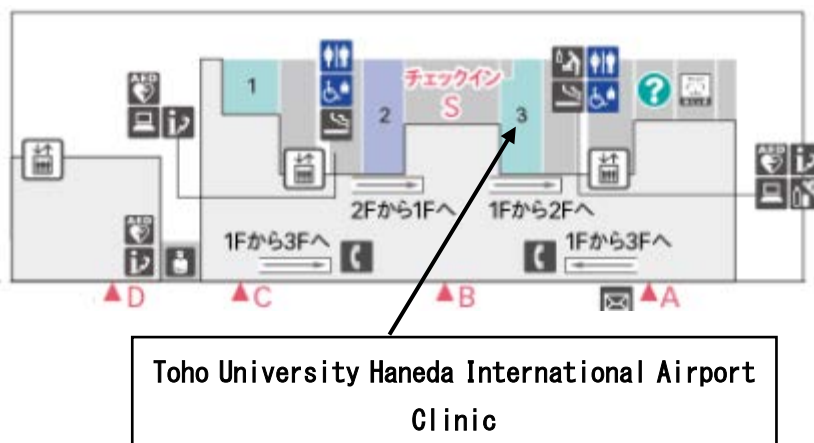
For further details, please refer to the following URLs.

Toho University Haneda International Airport Clinic

<https://www.haneda.toho-u.ac.jp/international/english/index.html>

PCR Saliva Testing for Passengers Traveling Abroad (in Japanese)

<https://www.haneda.toho-u.ac.jp/international/information/2020PCR.html>



End

## Inquiries

General Affairs Section, Administration Department, Tokyo University Omori Medical Center  
6-11-1 Omori-nishi, Ota-ku, Tokyo 143-8541

Tel. 03-3762-4151 between 9:00AM and 5:30PM (except weekends and public holidays)

E-mail: [somu.omori@jim.toho-u.ac.jp](mailto:somu.omori@jim.toho-u.ac.jp)

URL: <https://www.omori.med.toho-u.ac.jp/eng/index.html>

PR and Branding Strategy Office, Japan Airport Terminal Co., Ltd.

Terminal 1, 3-3-2 Haneda Airport, Ota-ku, Tokyo, 144-0041

Tel. 03-5757-8030 between 9:00AM and 17:30PM (except weekends and public holidays)

URL: <https://www.tokyo-airport-bldg.co.jp/company/en/>

Tokyo International Air Terminal Corporation

2-6-5 Haneda Airport, Ota-ku, Tokyo, 144-0041

Tel. 03-6428-5901 between 9:00AM and 17:30PM (except weekends and public holidays)

E-mail: [tiat-kouhou@tiat.co.jp](mailto:tiat-kouhou@tiat.co.jp) URL: <https://www.tiat.co.jp/en/>

Public Relation Section, Corporate Communications Department, H.U. Group Holdings, Inc.

Shinjuku Mitsui Building, 2-1-1 Nishi-Shinjuku, Shinjuku-ku, Tokyo, 163-0408

Tel. 03-6279-0884

E-mail: [pr@hugp.com](mailto:pr@hugp.com) URL: <https://www.hugp.com/en/>